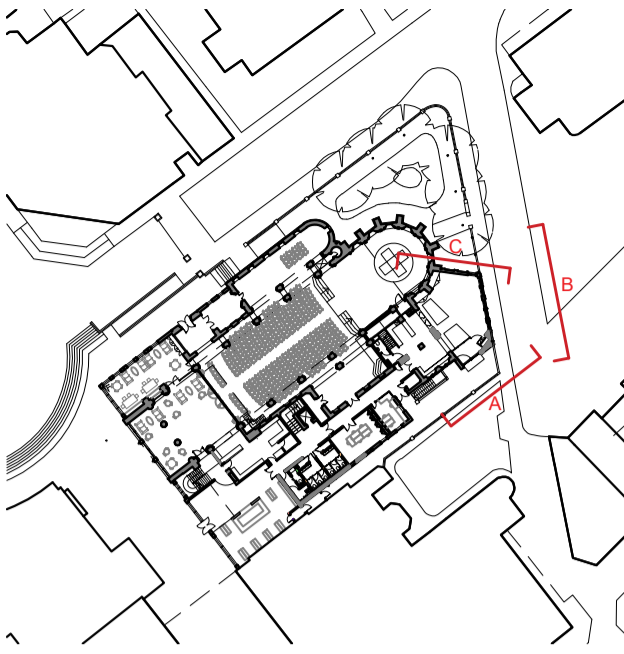
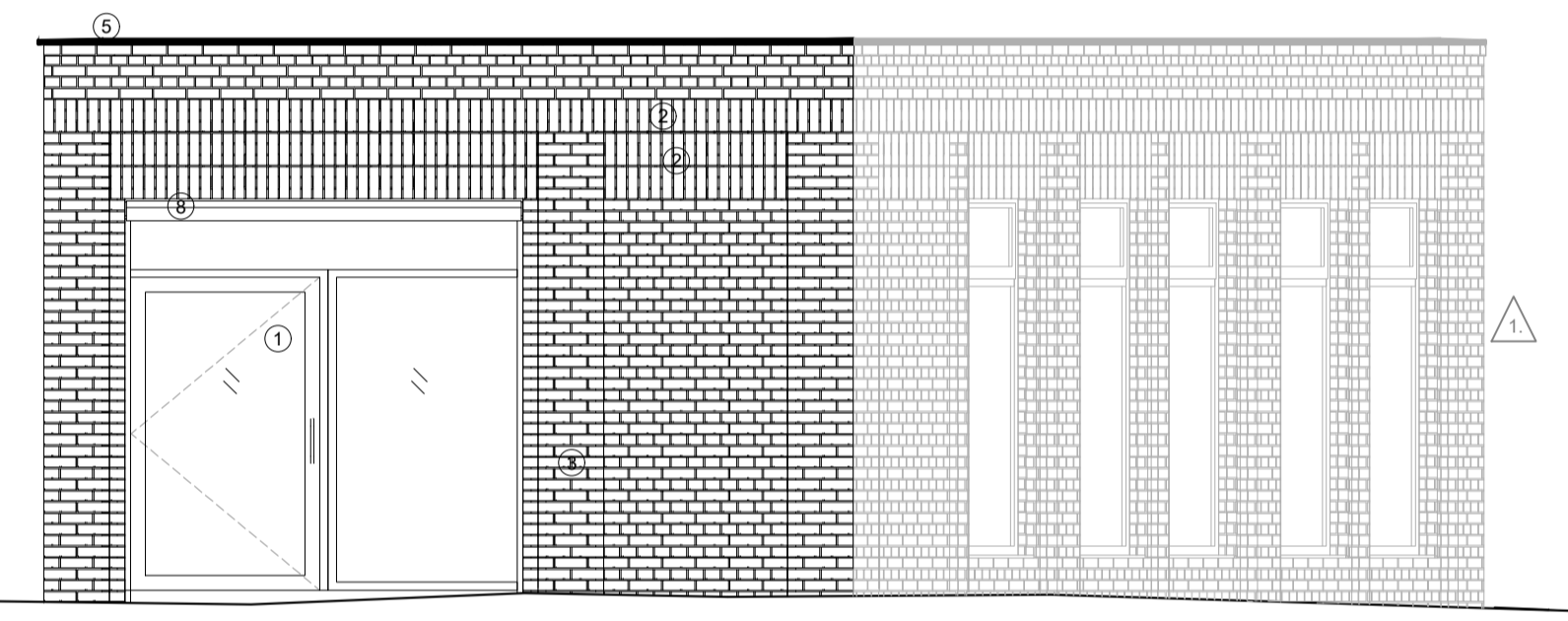


© Fathom Architects 2017
 - All dimensions are in millimeters unless otherwise noted
 - All levels are in meters above Ordnance datum (MCD) unless otherwise noted
 - Dimensions take priority, do not scale off the drawing (except for planning purposes)
 - All dimensions to be verified on site
 - Any discrepancies to be notified to Fathom in writing

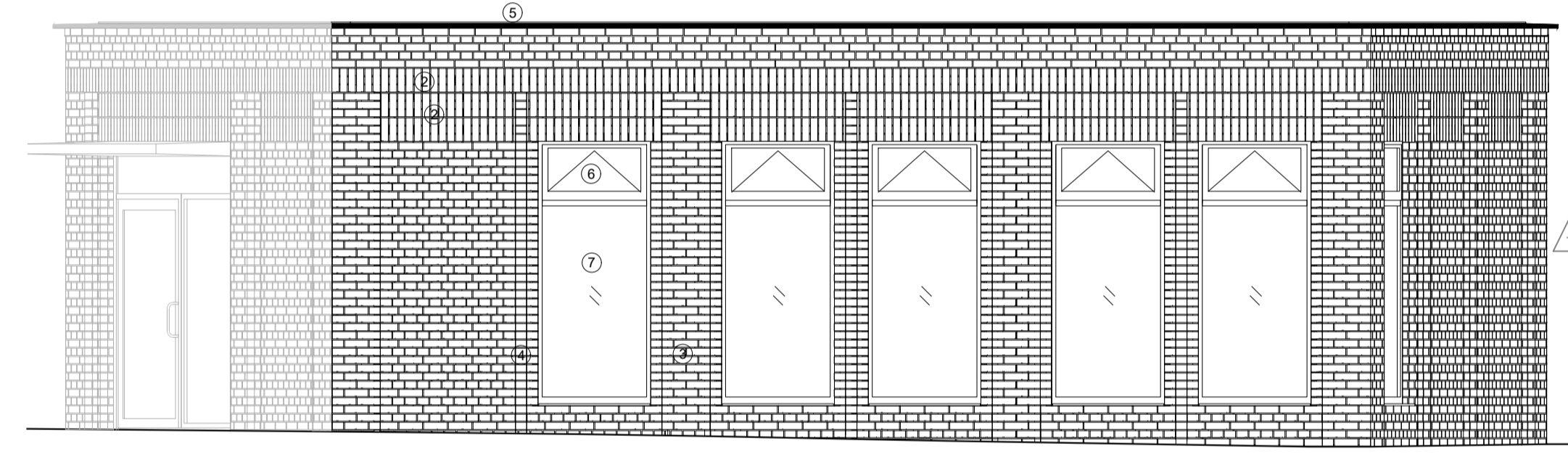


- Key:
1. Main entrance.
 2. Soldier course brick lintel piece.
 3. Bull-nose handmade brick, Kingston.
 4. Cow-nose handmade brick, Kingston.
 5. Dark grey metal coping, PPC.
 6. Windows open out, DGU.
 7. Fixed DGU with anodised aluminium frame.
 8. PPC aluminium canopy.
 9. Shadow gap at the interface with existing building.

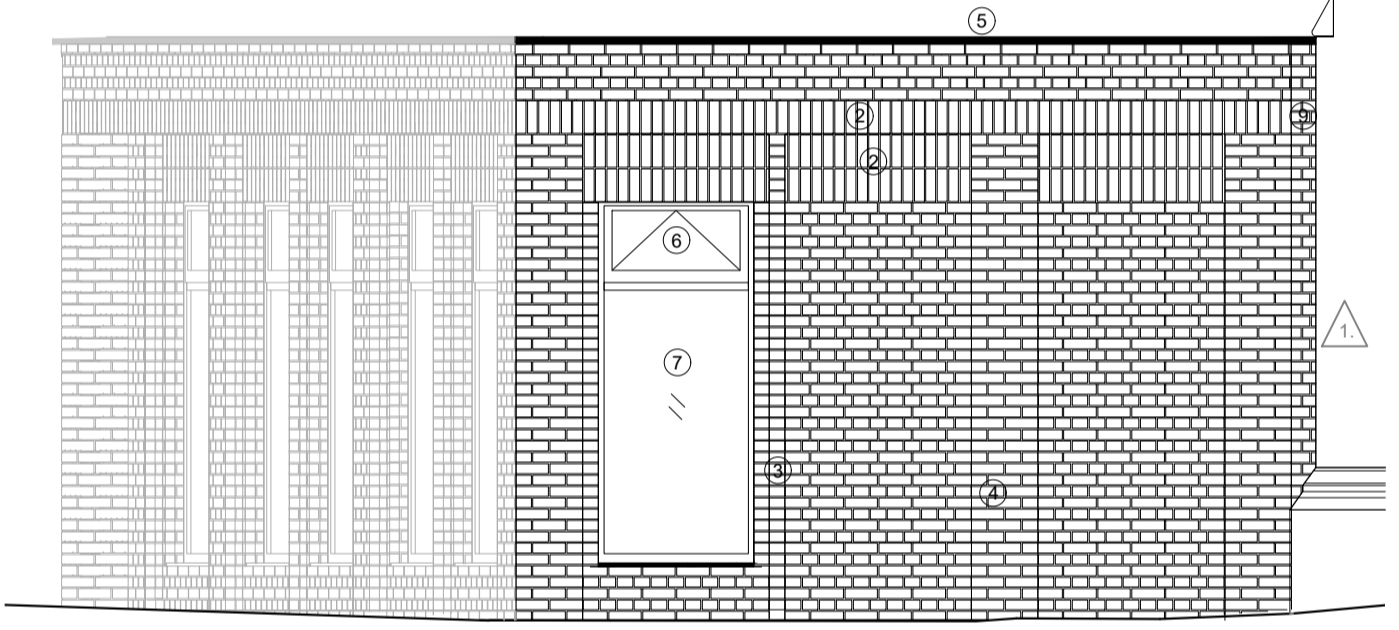
Drawing updates
 △ External wall of Youth Centre to change to brick



A. YOUTH CENTRE SOUTH EAST ELEVATION



B. YOUTH CENTRE NORTH EAST ELEVATION



C. YOUTH CENTRE NORTH ELEVATION

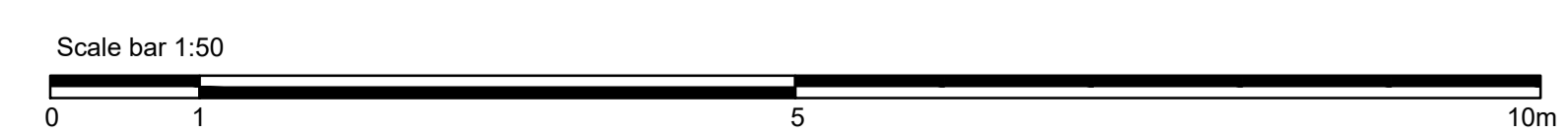
Rev.	Date	Reason for issue
00	30.11.18	For Planning
01	17.06.24	For Planning
02	02.10.25	Planning - Section 73

Fathom Architects
 +44 (0) 20 3151 1515
 fathomarchitects.com

Christ Church Woking PCC
 Jubilee Square
 Woking
 GU21 6YG

Project
 Christ Church Woking

Title
 Youth Centre True Elevations



Scale	Paper size	Scale	Paper size
1:50	@ A1	1:100	@ A3

Project no. 0051 Drawing no. F2204 Rev. 02